

**olivetti**



## INSTALLATION AND REFERENCE GUIDE

# ECR8200 PROGRAMMING UTILITY



---

**PUBLICATION ISSUED BY:**

**Olivetti S.p.A.**  
www.olivetti.com

*Copyright © 2011, Olivetti*  
All rights reserved



---

Your attention is drawn to the following actions that could compromise the functionality of the product:

- incorrect power supply;
- incorrect installation; incorrect or improper use, or, in any case, not in accordance with the warnings given in the User Manual supplied with the product;
- replacement of original components or accessories with others of a type not approved by the manufacturer, or carried out by unauthorised personnel.



---

## TABLE OF CONTENTS

<b>PREREQUISITES .....</b>	<b>4</b>
<b>INSTALLING THE ECR PROGRAMMING UTILITY SOFTWARE .....</b>	<b>5</b>
<b>CONFIGURING THE ECR PROGRAMMING UTILITY FOR WINDOWS XP .....</b>	<b>7</b>
<b>CONFIGURING THE ECR PROGRAMMING UTILITY FOR WINDOWS VISTA OR WINDOWS 7.....</b>	<b>12</b>
<b>USING THE ECR PROGRAMMING UTILITY SOFTWARE .....</b>	<b>17</b>
ECR SOFTWARE UTILITY - PROGRAM A NEW CASH REGISTER .....	18
ECR SOFTWARE UTILITY - UPDATE CASH REGISTER PROGRAMMING.....	19
ECR SOFTWARE UTILITY - SET UP A LOGO .....	20
ECR SOFTWARE UTILITY – HELP .....	21
<b>REMOVING THE ECR PROGRAMMING UTILITY.....</b>	<b>21</b>
<b>POSSIBLE ERROR MESSAGES DURING INSTALLATION.....</b>	<b>21</b>
<b>BARCODE READER INTERFACE .....</b>	<b>22</b>

## PREREQUISITES

To install the ECR Programming Utility software, you need:

- ECR Programming Utility software, Version Ecr\_82xx\_software\_5.xx.zip
- Desktop or laptop computer with a USB port, standard 1.1 or later
- A USB printer cable. The USB cable has to be order separately.
- ECR8200 cash register.



Ecr\_82xx\_software\_5.xx.zip





## INSTALLING THE ECR PROGRAMMING UTILITY SOFTWARE

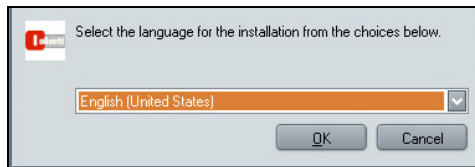
The ECR Programming Utility software, Version Ecr\_82xx\_software\_5.xx.zip, runs under Windows and is supported by the 32 bit and 64 bit operating systems: Win2000 and XP (32 bit), Vista and Windows 7 (32/64bit).

To install the **OLIVETTI ECR Programming Utility** on Windows, follow the instructions below:

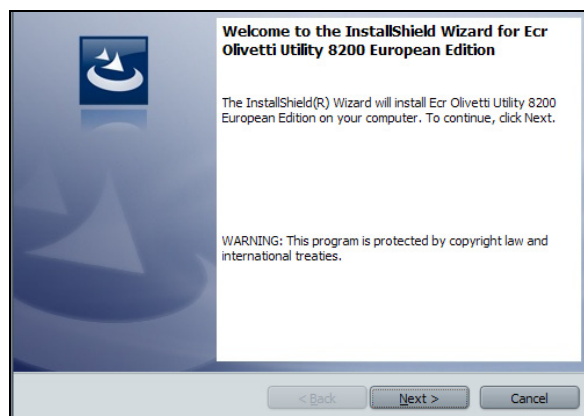
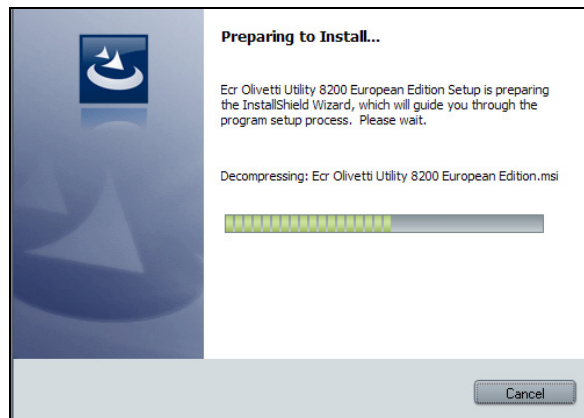
1. Download the zip-format file with the name "**Ecr\_82xx\_software\_5.xx.zip**" or higher version (from the Customer Care Cash Register area on the Olivetti site: <http://www.olivetti.com>).
2. Extract the contents of the zip file into a folder.



3. Run the **setup.exe** file (by double-clicking on the file named setup.exe).  
**Note:** On certain operating systems when you double-click the setup.exe file to run the program, you are asked to confirm execution ("**Are you sure you want to execute the software?**"). In this case, confirm execution of the setup program.

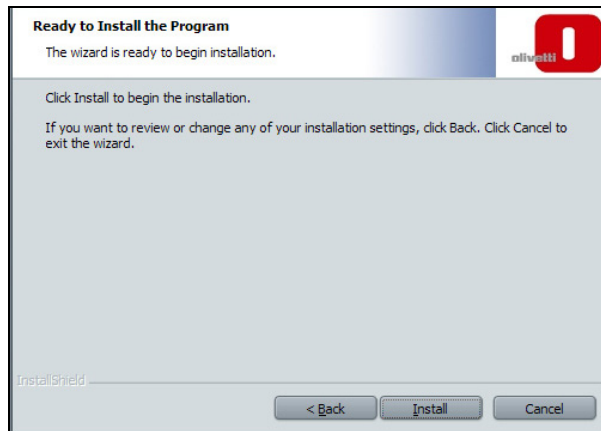


4. Follow the instructions displayed on the screen, select the language you require for the installation and confirm with **OK**.  
**Note:** The language you choose for installation does not prevent you from choosing another language once installation is complete. The language used by the interface can be modified from within the program.

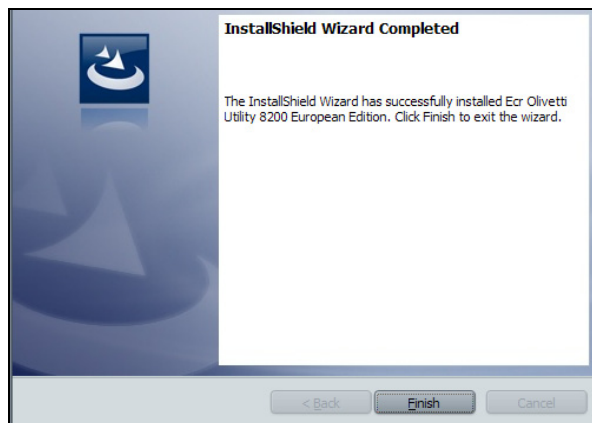




5. Click **Next** to continue with installing the program.  
Follow the instructions provided on the screen to complete installation.



6. Click to **Install**. Wait until installation terminates.



7. At the end, the message **"Installation of ECR Programming Utility complete"** is displayed to indicate that the setup procedure has been completed successfully.
8. Click **Finish**.
9. To use the software, you must now configure the system for your operating system.

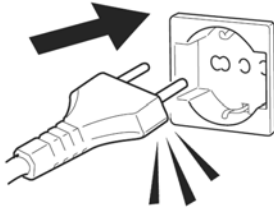
*If you are using the Windows XP operating system, refer to the section **"Configuring the ECR Programming Utility for Windows XP"***

*or*

*If you are using the Windows Vista/7 operating system, refer to the section **"Configuring the ECR Programming Utility for Windows Vista or Windows 7"**.*

## CONFIGURING THE ECR PROGRAMMING UTILITY FOR WINDOWS XP

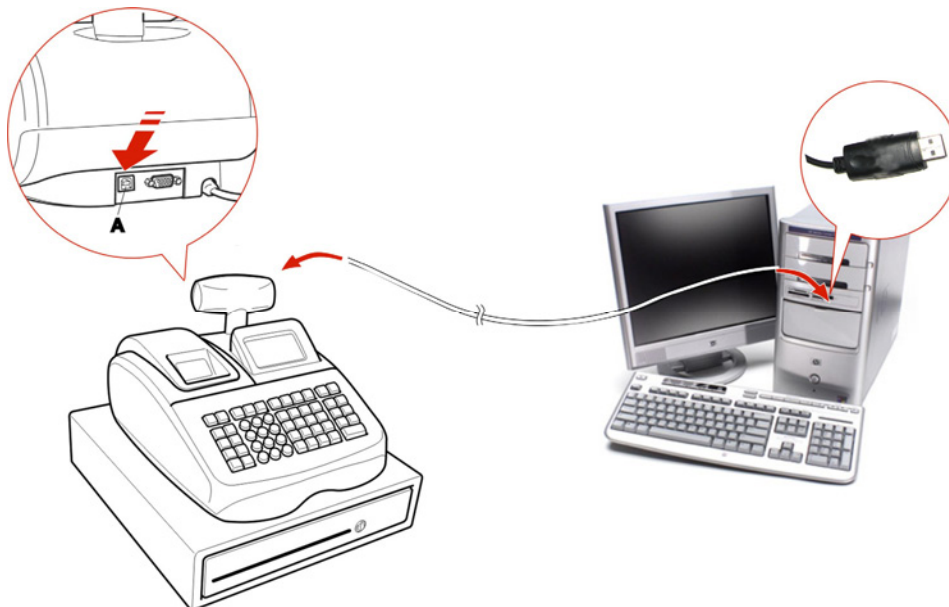
1. Connect the cash register to a 220V electricity outlet.



2. Select Main menu, use the arrow keys to select **OFF MODE**, then confirm with the **TOTAL** key.



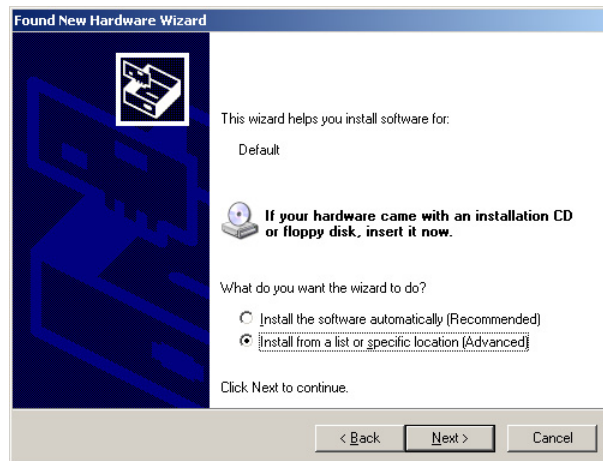
3. Connect the computer to the cash register using the USB cable.



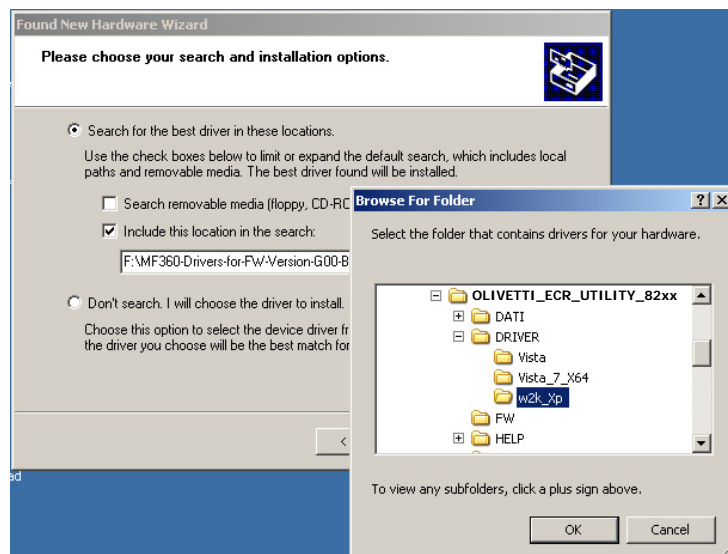
4. Wait until the computer detects the presence of the new USB peripheral device - displaying the message "**Found New Hardware Wizard**" - and then searches for the drivers necessary.



5. Select "**Yes, this time only**" as shown above and click "**Next**".

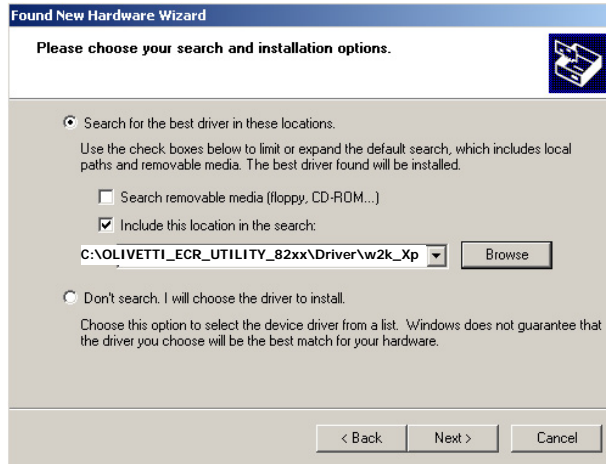


6. Select "**Install from a list or specific location (Advanced)**" as shown above and click "**Next**".

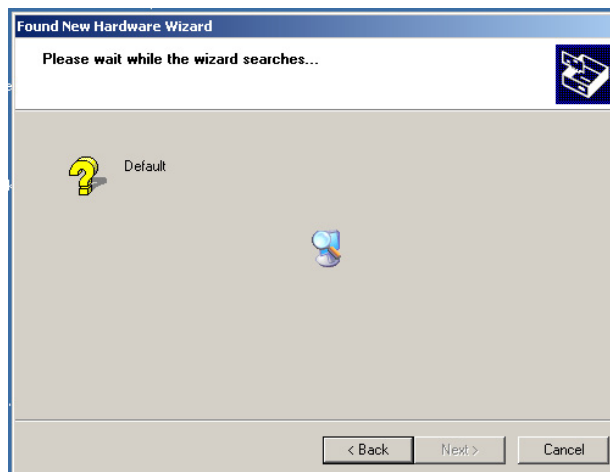




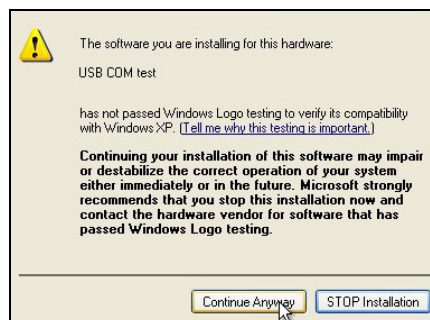
7. Select " **Include this location in the search** " and enter the file path in the text box (*the default location on your PC is C:\OLIVETTI\_ECR\_Utility\_82xx\Driver\w2k\_Xp*), or browse to it by clicking the "**Browse**" button and then select the folder. Once the file path is entered in the box, click "**OK**" to proceed.



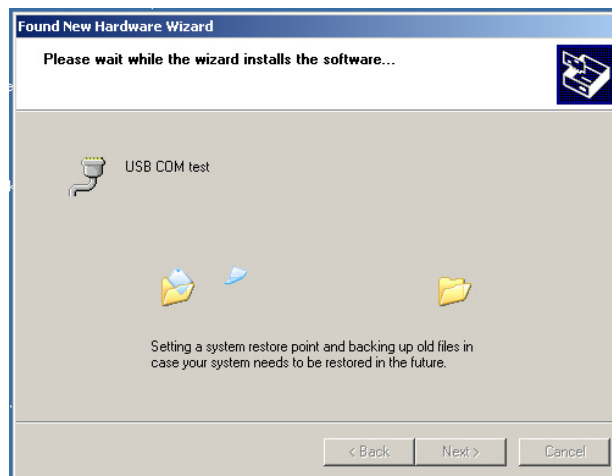
8. Click "**Next**" and wait until the system selects the appropriate driver for your operating system.



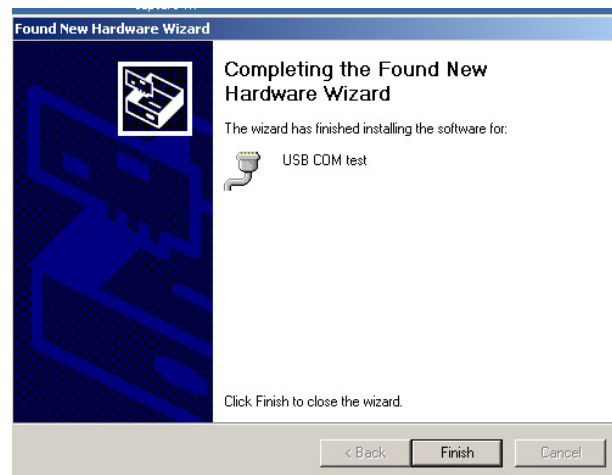
9. During installation, a message appears on the screen related to certification of compatibility with Microsoft products. Click on **Continue anyway**.



10. The following screen is displayed as Windows copies the driver files required.



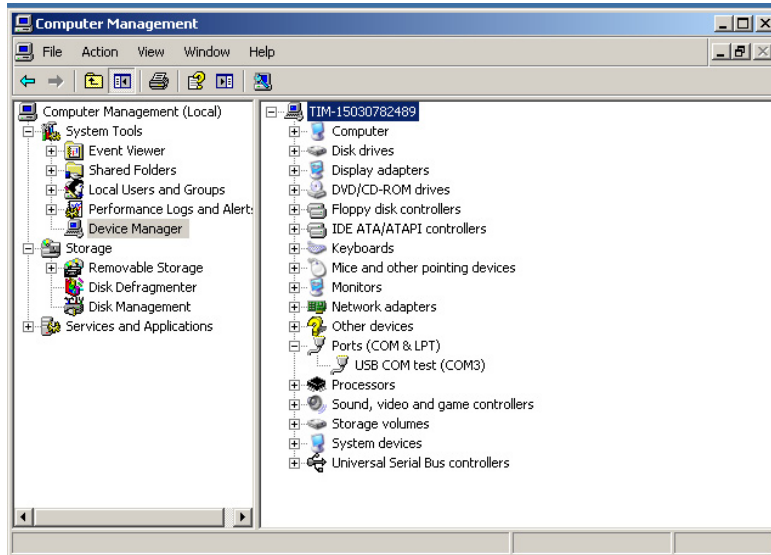
11. Windows then displays a message indicating that installation has been successful:



12. Click "**Finish**" to complete the installation.



13. Verify that the USB COM test port is installed correctly. To verify the installation, go to **Start>Control Panel** and double click on **System**. Select **Hardware>Device Manager** and open the item **Ports** to see the result, that will resemble the following screen.



The “**Olivetti ECR Programming Utility**” is now configured on your computer.



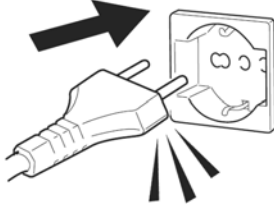
Ecr\_Utility  
8200

14. To run the program, double-click the icon present on the desktop, or select it from the menu **Start>Programs>Olivetti Ecr Utility 82xx**.

---

## CONFIGURING THE ECR PROGRAMMING UTILITY FOR WINDOWS VISTA OR WINDOWS 7

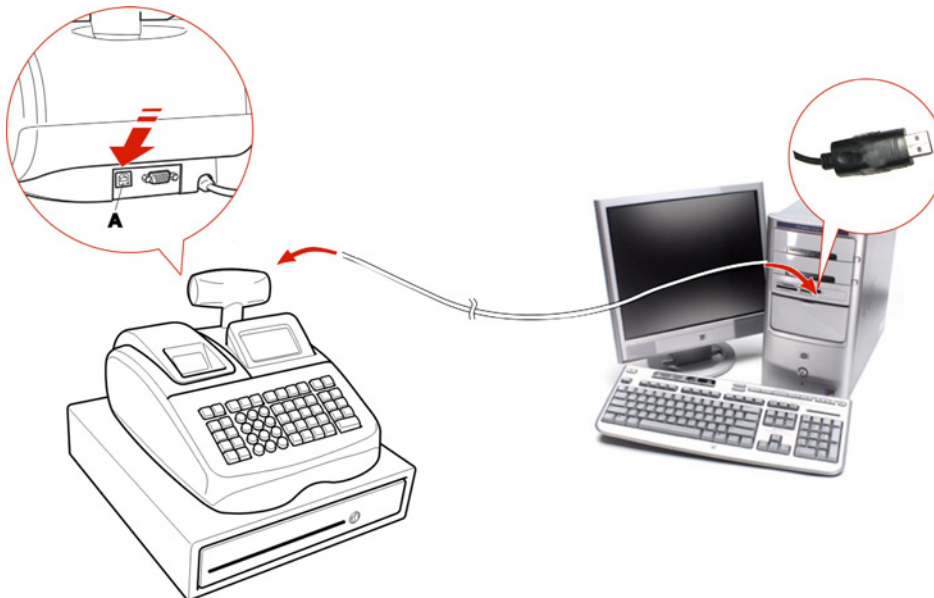
1. Connect the cash register to a 220V electrical outlet.



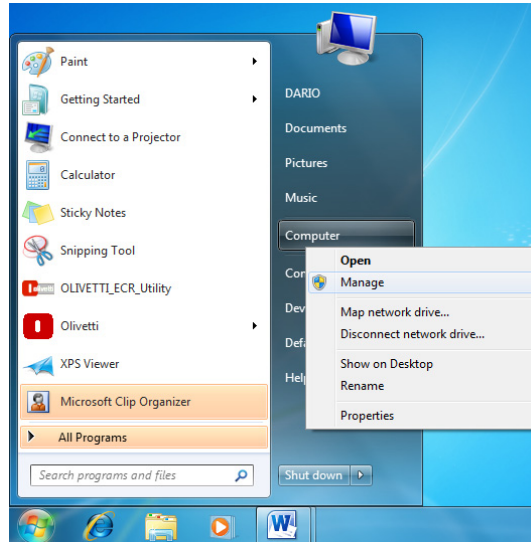
2. Select Main menu, use the arrow keys to select **OFF MODE**, then confirm with the **TOTAL** key.



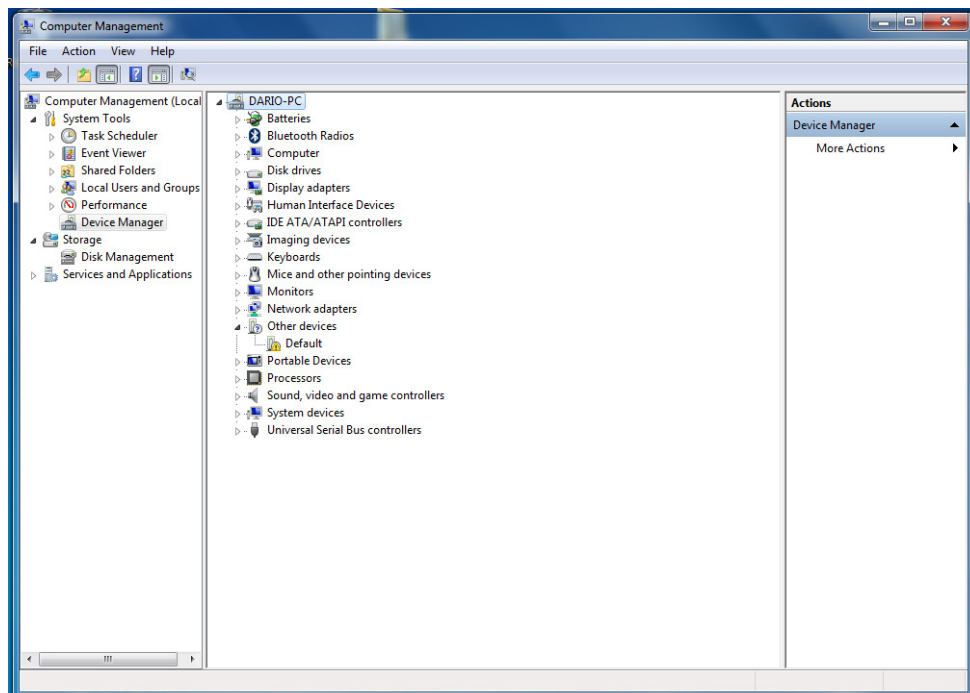
3. Connect the computer to the cash register using the USB cable.



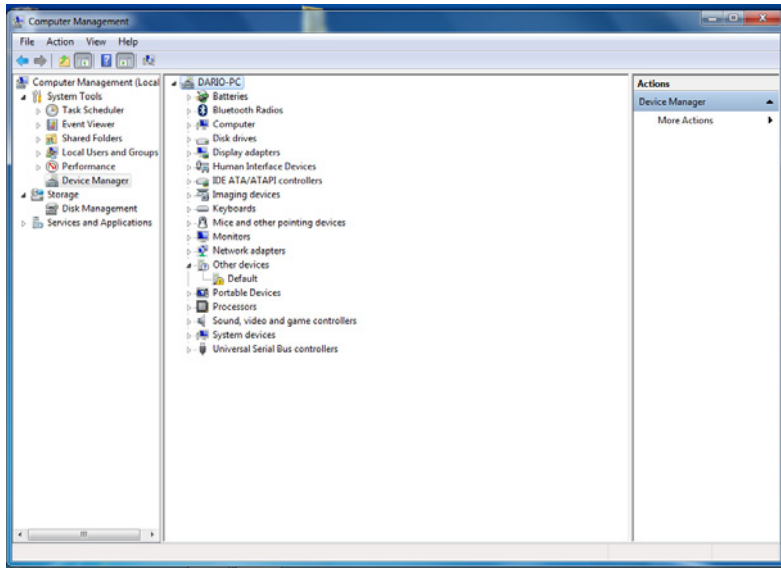
4. Wait until the computer detects the presence of a new USB peripheral device and upgrade the peripherals in the system.
5. Go to the Computer Management following the screen instructions.



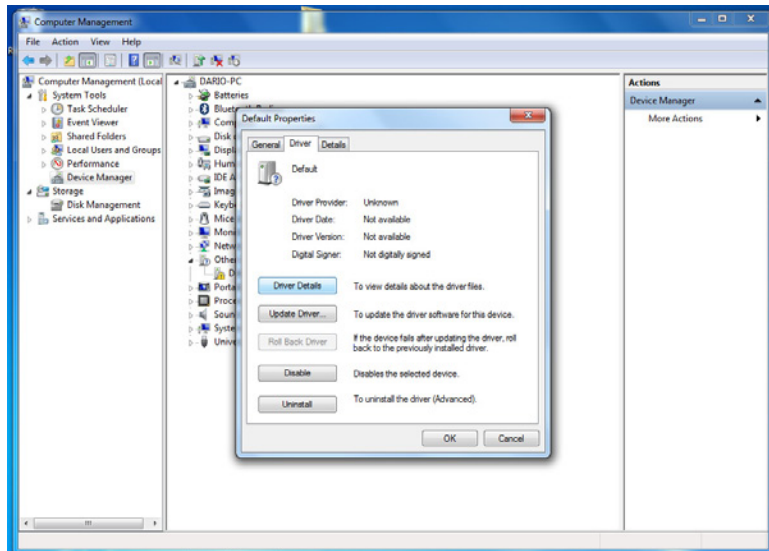
6. Click "**Manage**". The screen below appears.



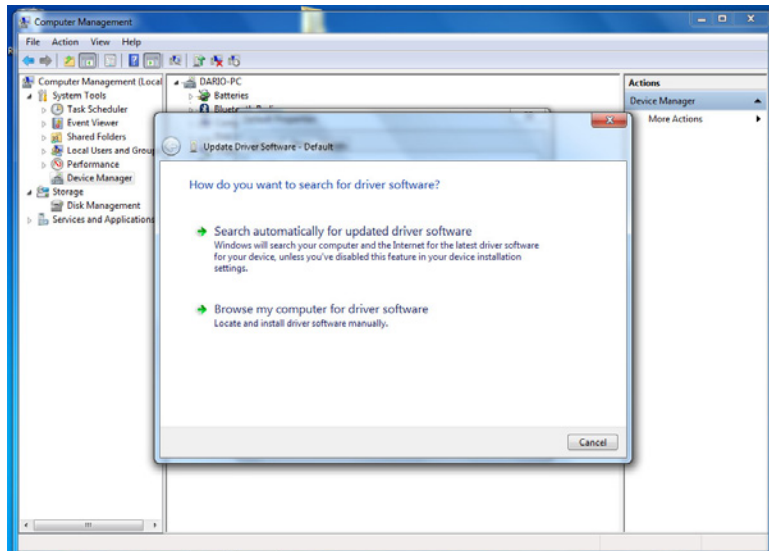
7. Select "**Other devices**".



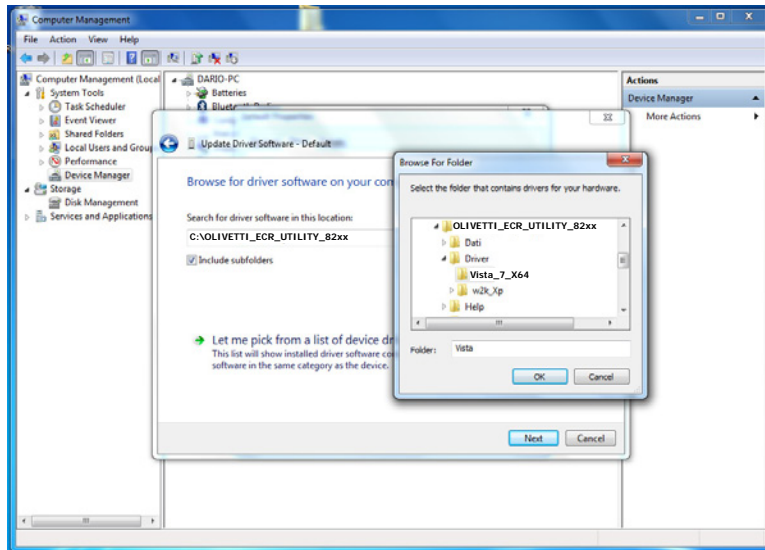
8. With "**Other devices**", click the right mouse button and select **Properties**.



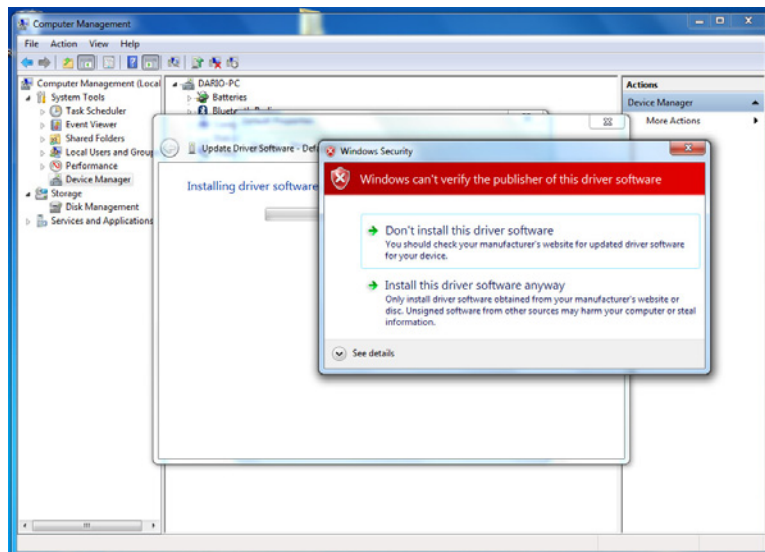
9. Click "**Update Driver**".



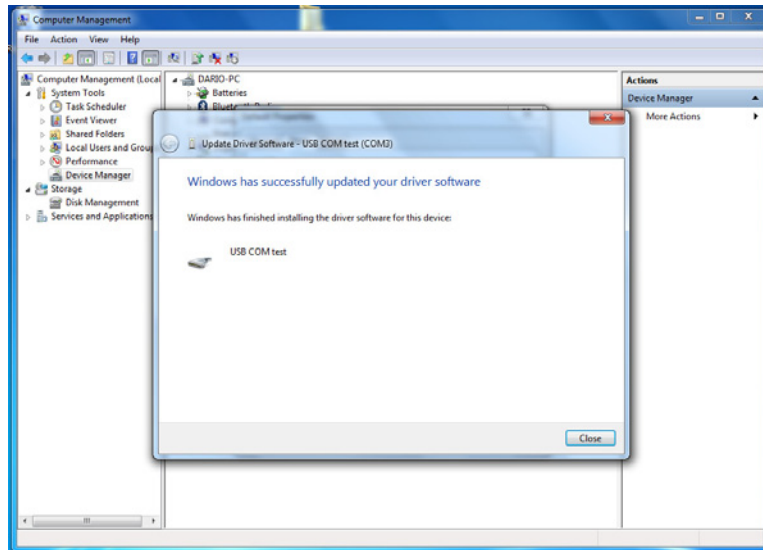
10. Select **"Browse my computer for driver software"**.



11. Browse for folder and enter the file path in the text box, *the default location on your PC is **C:\OLIVETTI\_ECR\_Utility\_82xx\Driver\Vista (32 bit) or Vista\_7\_X64 (64 bit)***, and select the folder. Once the file path is entered in the box, click **"OK"** to proceed.



12. Select **"Install this driver software anyway"**.



13. Click **"Close"** to complete the installation.

The **"Olivetti ECR Programming Utility"** is now configured on your computer.



Ecr\_UTILITY  
8200

14. To run the program, double-click the icon present on the desktop, or select it from the menu **Start>Programs>Olivetti Ecr Utility 82xx**.



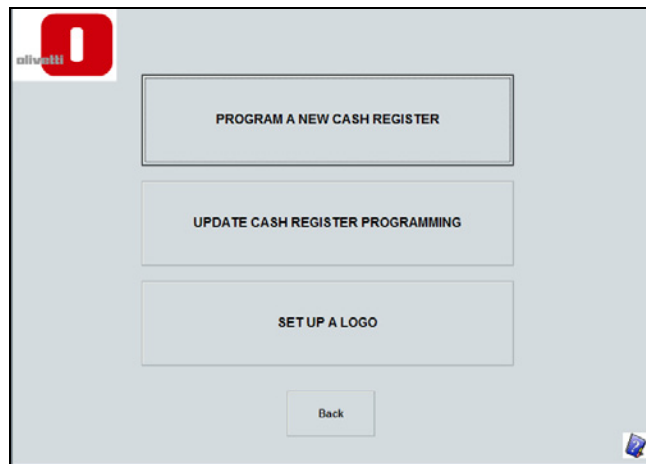


## USING THE ECR PROGRAMMING UTILITY SOFTWARE

The ECR Programming utility software allows the user to program the cash register from a computer and comprises the following operating environments.




To change the interface language, press the **Language Selection** button. To start programming, depending on your cash register model, click on either the ECR8200 icon in the main window. The main user screen is displayed.



To get started, select:

- **PROGRAM A NEW CASH REGISTER** to program a cash register for the first time.
- **UPDATE CASH REGISTER PROGRAMMING** to modify the cash register programming data.
- **SET UP A LOGO** to create a personalised logo for printing on receipts.

- **HELP**  - For help regarding any dialog box, click the book icon (bottom right) or the **F1 key** on your keyboard.

### Note:

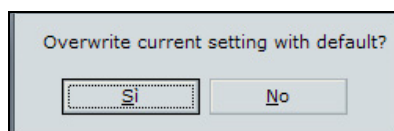
- Before using the Olivetti ECR Programming Utility, the cash register must be connected to a **220V current outlet**
- **The key must be in the OFF position.**
- When sending programming data for the first time to the cash register, or when modifying existing programming data, the amount of time taken depends on your operating system and computer configuration. For complex settings, the time required could exceed one minute.

## ECR SOFTWARE UTILITY - PROGRAM A NEW CASH REGISTER

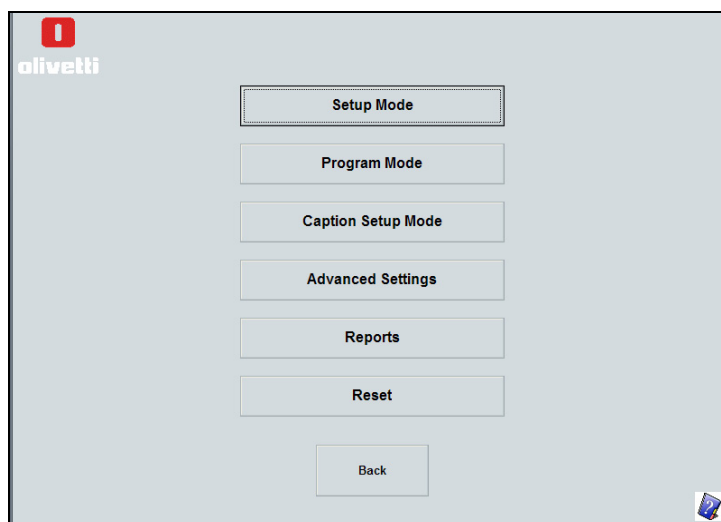
This functionality is used primarily by a Service Technician to return the cash register to its factory (default) configuration.

To create a new configuration, proceed as follows:

1. Click on the **PROGRAM A NEW CASH REGISTER** button.
2. Select **Yes** to continue or **No** to return to the main screen.



3. After choosing **Yes**, the main screen appears from which you can choose the various programming activities:



4. To program a cash register, you can choose between these options:

- **Setup Mode** - to set options for:
  - the basic setup, such as date and time formats
  - financial calculations (VAT & Foreign Currency)
  - receipt tax details and report printing
  - clerk system activation
  - Electronic Journal (EJ) storage
- **Program Mode** - to set up:
  - sales registration data, such as PLUs, departments, VAT and Foreign Currency (FC) rates
  - individual clerks and their passwords
  - manager and training mode passwords
  - transaction keys such as Paid Out (PO), Received on Account (RA) and discount/add-on keys
  - barcodes.
- **Caption Setup Mode** - to customise the text that appears on receipts and displays.
- **Advanced Setting** - to automate report printing and program keyboard functions and pop-up lists.
- **Reports** - to generate reports and save them on your PC.
- **Reset** – reset the Olivetti Cash Register.

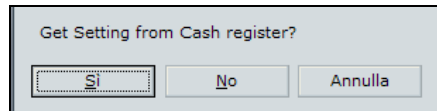
**Note:** In order for any changes made in the programming screens to be actually applied, press the **Save** button followed by **Send to ECR** to save the changes on the cash register.

## ECR SOFTWARE UTILITY - UPDATE CASH REGISTER PROGRAMMING

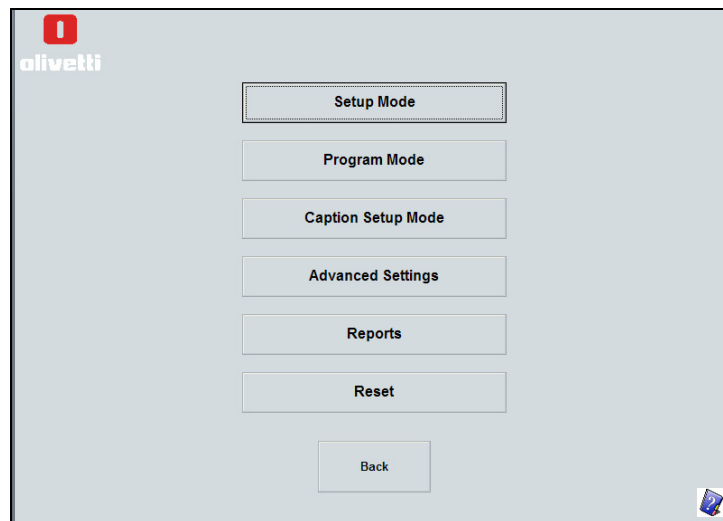
This functionality is used to retrieve programming data from the cash register, or to retrieve programming data from the computer on which the software utility is installed.

To modify the programming data, proceed as follows:

1. Click on the **PROGRAM A NEW CASH REGISTER** button.
2. Select **Yes** to retrieve the programming data present on the cash register.  
Press **No** to retrieve the programming data present on the computer.  
Press **Cancel** to return to the Main menu.



3. After choosing either **Yes** or **No**, the Main menu is displayed from which the various programming activities can be chosen:



4. To program a cash register, you can choose between these options:

- **Setup Mode** - to set options for:
  - the basic setup - such as date and time formats
  - financial calculations (VAT & Foreign Currency)
  - receipt tax details and report printing
  - clerk system activation
  - Electronic Journal (EJ) storage
- **Program Mode** - to set up:
  - sales registration data, such as PLUs, departments, VAT and Foreign Currency (FC) rates
  - individual clerks and their passwords
  - manager and training mode passwords
  - transaction keys such as Paid Out (PO), Received on Account (RA) and discount/add-on keys
  - barcodes.
- **Caption Setup Mode** - to customise the text that appears on receipts and displays.
- **Advanced Setting** - to automate report printing and program keyboard functions and pop-up lists.
- **Reports** - to generate reports and save them on your PC.
- **Reset** – reset the Olivetti Cash Register.

**Note:** In order for any changes made in the programming screens to be actually applied, press the **Save** button followed by **Send to ECR** to save the changes on the cash register.



---

## ECR SOFTWARE UTILITY - SET UP A LOGO

To be able to send a logo to the cash register, an image must be created using the computer with the following features:

### Graphic logo features

Some restrictions apply as to the type of Logo:

- *Logo size: **Width 288 x Height 216 (pixels) in black and white (BIW mode).***
- *If the ratio of black dots printed with respect to white is high, the ECR is unable to print the graphic image correctly due to power consumption limitations.*

To create a logo you can use a program such as Paintbrush, which is present in all versions of the operating system, saving the image in the folder **C:\OLIVETTI\_ECR\_Utility\_82xx\Image**.

Then, to load the logo saved on the computer, proceed as follows:

1. Click the **SET LOGO** button. A dialogue box appears on the screen.



2. Click the **Browse** button to choose the image saved on the computer that is to be used as a logo, selecting it from the folder **C:\OLIVETTI\_ECR\_Utility\_82xx\Image**
3. Press the **Send to ECR** button to send it to the cash register.



---

## ECR SOFTWARE UTILITY - HELP

This utility provides the user with contextual help on each program screen, providing information regarding all items appearing in the screen.



To activate the help, just press **F1** or click the icon.

## REMOVING THE ECR PROGRAMMING UTILITY

When removing software programs from Windows, you must always use the Add/Remove Programs utility so that files and registry entries are also removed, and the system is left in a clean state.

- On Windows 2000, select **Start > Settings > Control Panel > Add/Remove Programs** (depending on your operating system), then select **OLIVETTI ECR Programming Utility** to remove the related software.
- On Windows XP/Vista/7, select **Start > Control Panel > Programs**.  
Select the **OLIVETTI ECR Programming Utility**.  
Click the **Add/Remove** button to remove the related software.

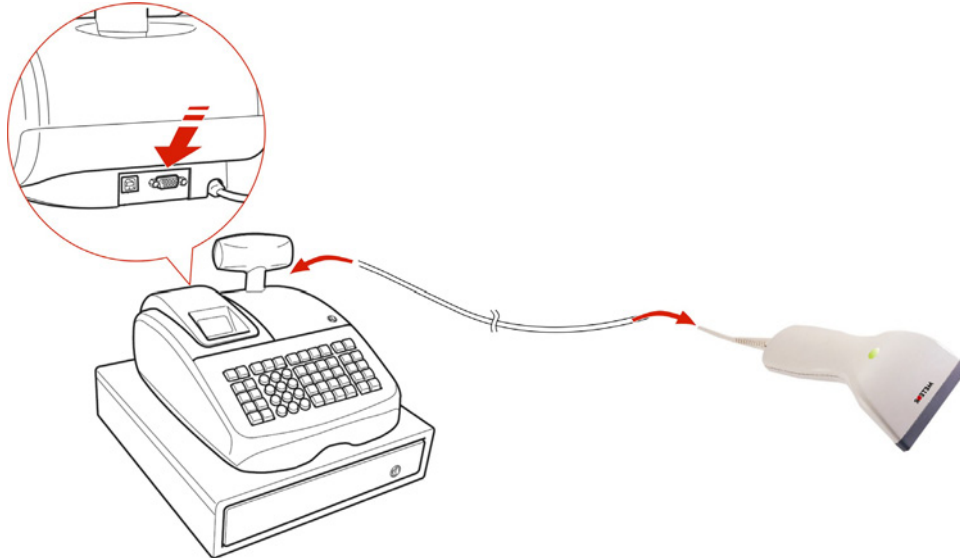
## POSSIBLE ERROR MESSAGES DURING INSTALLATION OF THE SOFTWARE

While installing the software, errors could occur relating to installation of the communications driver that emulates a COM port for the USB port.

<b>Problem</b>	<b>Checks to perform</b>
Software utility cannot communicate with cash register	Check that both connectors of the USB to COM connection cable are inserted correctly, respectively into the computer USB port and the cash register <b>COM</b> port.
	Verify that the USB port is installed correctly on the computer. To check, open <b>Computer Management</b> and ensure that " <b>COM Test</b> " port is present <b>without any yellow indicator sign</b>
	Try powering the cash register off and on again.
	If the cash register is connected to the power supply, make sure that it is powered on and that the Main menu is displayed on the screen.

## BARCODE READER INTERFACE

A barcode reader can be connected to the cash register using the 9-pin serial port.



*Pin assignments for D-sub 9-pin (Barcode reader side):*

Pin No.	Function
2	TXD
3	RXD
5	GND
7	CTS
8	RTS
9	+5V

*RS232C communications parameters*

A barcode reader with either of the following configurations can be used:

	Baud Rate	Data Length	Parity	Stop Bit
PS700 Default Settings	9600	8 bits	No	1
Metrologic MS5100 Eclipse Default Settings	9600	7 bits	Space	2

*Data format*

Bar Code Number (ASCII Code)	CR (0D<hex>)	LF (0A<hex>)
------------------------------	--------------	--------------

**Note:** The cash register is able to receive scanned data from a barcode reader in the data format above. This format is the default setting for the PS700 and Metrologic MS5100 Eclipse. If you use another type of barcode reader, please change the transferred data to the format above using your barcode reader. For programming instructions, refer to your barcode reader instruction manual.